

ESI Safety Rules

Unit Code: UETDRMP002

Unit Name: ESI safety rules for work on, near or in the vicinity of electrical apparatus

Status: Current

Descriptor:

This unit covers the knowledge and understanding of electricity supply industry (ESI) safety rules for work on, near or in the vicinity of ESI electrical apparatus. It includes the relevant state and territory safety rules, and organisational workplace requirements and how it applies to ESI workers to meet work health and safety (WHS)/occupational health and safety (OHS), mobility and mutual aid requirements

Unit Entry Requirements: There are no training package requirements that apply to this unit of competency, however, a knowledge of electrical theory and electrical infrastructure will assist in understanding unit requirements. An introductory course to cover these subjects is recommended to be added to this training if this knowledge is not held.

Duration: Initial – 6 hours, Refresher 3 hours

Location: ESITC or workplace nominated facility

Mode of delivery: Face to face

Participants: Individual and group bookings available

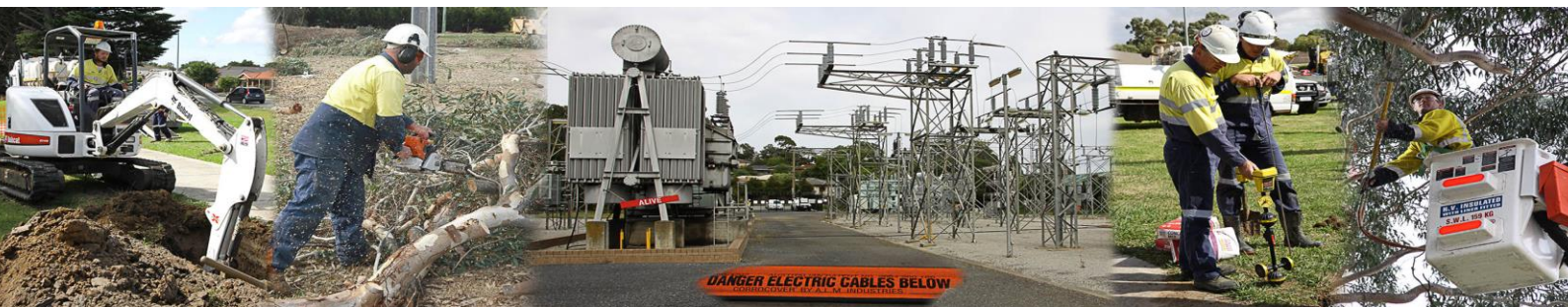
Entry Requirements:

- Basic literacy, numeracy and writing skills are required.

Outcome:

- On successful completion of this course, students will be issued with a nationally recognised Statement of Attainment from ESI Training & Consulting Pty Ltd (RTO 45463)

Other information:



ESI Safety Rules

- To successfully complete this training course participants must successfully complete a combination of written and practical assessments to demonstrate the competency requirements of this training course.
- You may be eligible for Recognition of Prior Learning (RPL) and/or Credit Transfers
- Please refer to the 'Student Handbook' for further information regarding our policies and procedures, including complaints, appeals and support. This is available on our website www.esitc.com.au or by request.
- ESITC is responsible for the quality and compliance of the training and assessment in accordance with 'Standards for Registered Training Organisations (RTOs) 2015'
- Attendance at this course does not guarantee:
 - A student will successfully complete the training program
 - A student will obtain a particular employment outcome (which is outside of ESI Training & Consulting's control)

**For further information regarding this qualification,
please contact ESI Training & Consulting on 03 8789 8783 or
admin@esitc.com.au**

